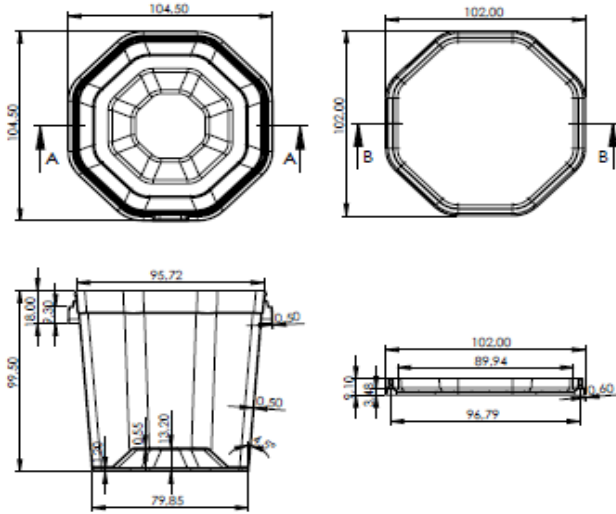


PACKAGE CODE: JP-500



LID CODE: JP-501

DIMENSION (mm) (± %5)	VOLUME(ml) (± %5)	WEIGHT (gr) (± %5)
Package Width: 1104,5 Package Length: 104,5 Package Height : 99,5 Lid Width : 102,00 Lid Length : 102,00 Lid Height : 9,1	volume: 535	Package: 19,1 lid: 7,00 Total: 26,1

APPLICABLE DECORATION

IML

RAW MATERIALS

Raw Material	PP	
Masterbatch	PE based Masterbatch	
Color	All colors are applicable	

PERFORMANS

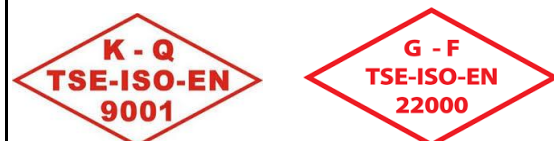
HIGH TEMPERATURE USE: Generally allowed filling temperature is 85°C. After hot filling, attention should be paid to stacking. In order for the packing to reach the appropriate stacking strength, the product and packing must cool.

LOW TEMPERATURE USE (-10 and below) Products suitable for use must be produced with special raw materials. Before approval, products must be subjected to trial tests at low temperatures.

SHELF LIFE : The features in this technical specification form are valid for 12 months under appropriate storage and storage conditions. Packing should be stored in closed, moisture-free environments away from direct sunlight.

QUALITY INFORMATION: Our production is carried out with a quality and hygiene system that is regularly inspected by the Turkish Standards Institute. Our products are suitable for use on all foodstuffs. All parameters that need to be checked periodically are analyzed by accredited laboratories.

CERTIFICATE



RAW MATERIAL SPECIFICATIONS



The technical specifications of the product can be determined by JETPAK PLASTİK KİMYA AMBALAJ GIDA SAN. AND TRADE LTD. ŞTİ. without the need for any permission or information can be changed by .